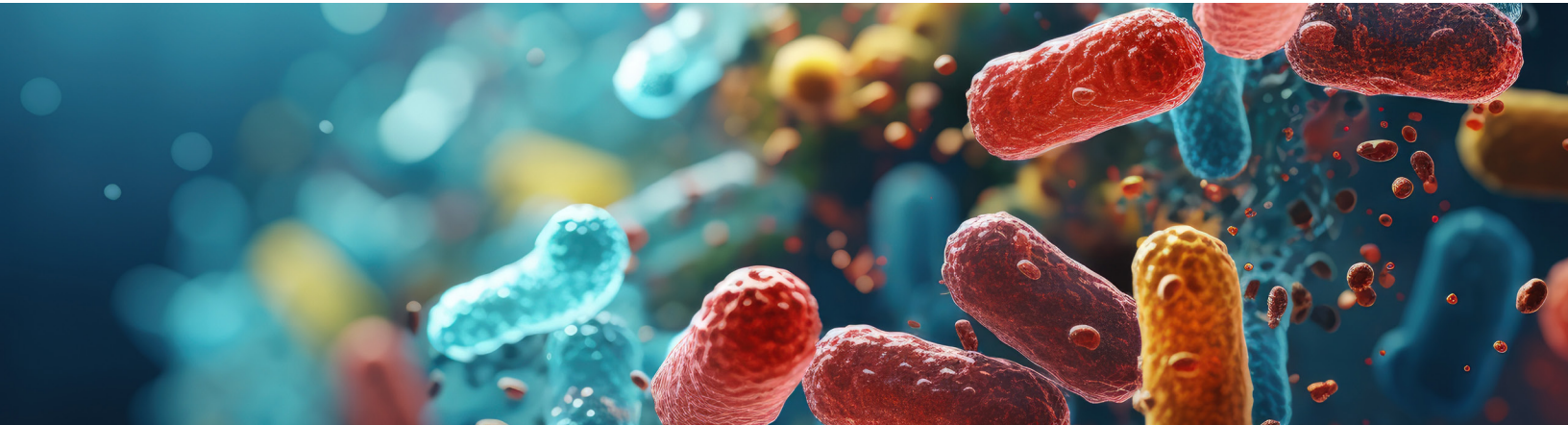


Shiga Toxin producing *E.coli* (STEC) testing



right solutions.
right partner.



Shiga toxin producing *E.coli* or STEC are highly infective and potentially very harmful bacteria present in many different product types. Whilst testing in commercial labs has previously focused on one serotype – the infamous *E.coli* O.157 – pressure is being put on testing laboratories, producers and retailers alike to test for the other dangerous serotypes as outbreaks and illness are being linked more often to other Shiga toxin producing *E.coli*.

In this webinar we will cover:

- » What is STEC?
- » Transmission and prevention.
- » The effect STEC infections can have on consumers.
- » Notable cases and how STEC can be tested for.
- » It will also outline the methods available at ALS to cover all of your testing needs.

- Duration: 60 minutes including Q&A
- Speaker: Beth Draper - ALS Head of Specialist Microbiology
- Cost: 55€+ VAT (per person)

Contact Us / Book Now ALS Laboratories (UK) Ltd.

Aspen Court,
Centurion Business Park,
Bessemer Way,
Rotherham.
S60 1FB United Kingdom

O: +44 (0)1709 777300

E: Consultancy.uk@alsglobal.com

You will receive a certificate of attendance for your participation